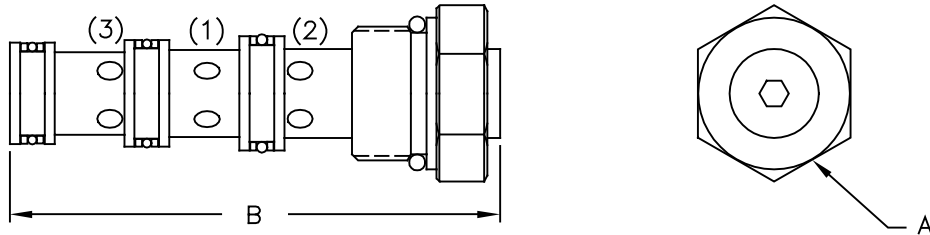




FLOW DIVIDER/COMBINER

Industry Standard Cartridge



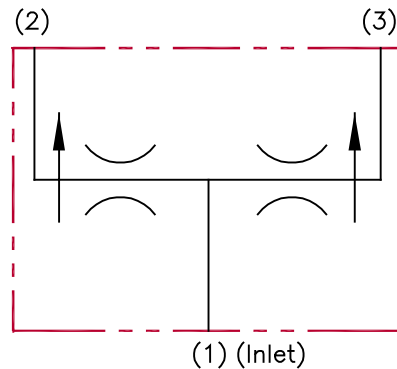
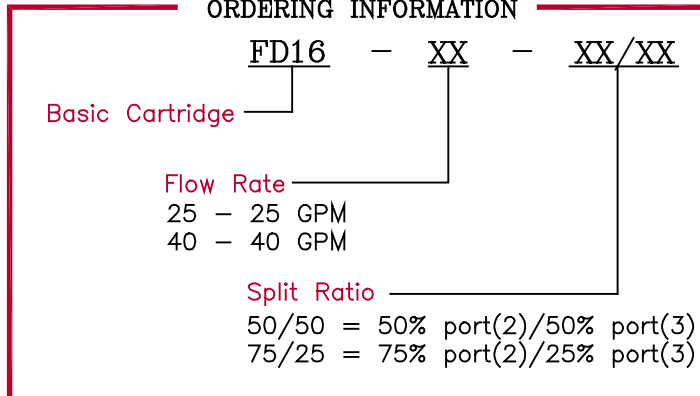
SPECIFICATIONS

Type	Pressure compensated spool-type flow divider/combiner. Fits industry standard cavity.	Rated Flow	Up to 50 gpm
Operation	Input flow from (1) is diverted and split between (2) and (3) based upon ratios specified. Flows from (2) and (3) are combined and converge to (1).	Flow	Tolerance: ±10% from 25%–100% of rated flow
		Max. Pressure	3,000 psi
Material	All steel construction	Fluid	General hydraulic fluid
		Operating Temp.	–40°F to +200°F
Cavity	C16–4	Seals	Buna–n o–rings Teflon backups

DIMENSIONS

Model	Thread Size	Cavity	A Hex	B
FD16–XX–XX/XX	1 5/16–12 un–2a	16–4	1 1/2	4.85

ORDERING INFORMATION



All dimensions in inches