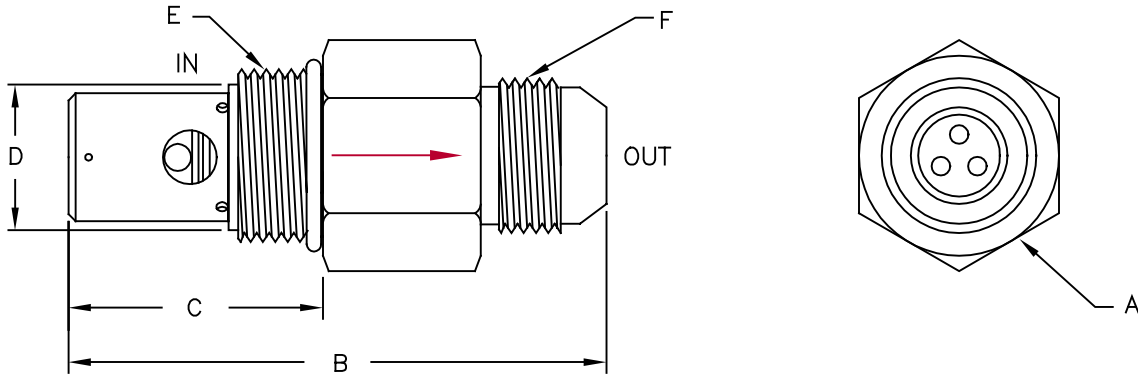


1295 SERIES



FIXED FLOW CONTROL PRESSURE COMPENSATED W/FREE REVERSE FLOW CHECK SAE Threaded Cartridge



(Arrow indicates direction of controlled flow)

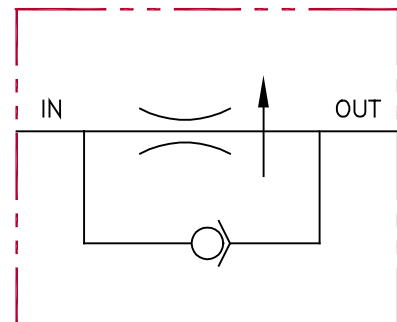
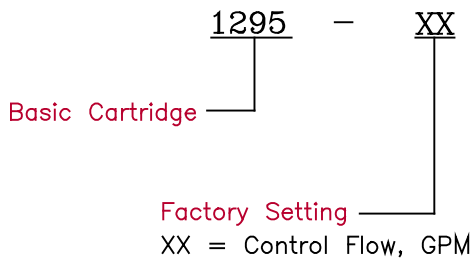
SPECIFICATIONS

| | | | |
|------------|--|---------------------|---|
| Type | Pressure compensated flow control. | Flow | Preset by factory to customer specified value (Tolerance: ±15%) |
| Operation | Controls flow in one direction to a preset maximum over a varying pressure range. Internal check allows free reverse flow. | Max. Pressure | 3,000 psi |
| | | Press. Differential | 50 to 100 psi |
| | | Fluid | General hydraulic fluid |
| Material | All steel construction | Operating Temp. | -40°F to +200°F |
| Rated Flow | Up to 20 gpm | Seals | Buna-n |

DIMENSIONS

| Model | A Hex | B | C | D (Bore Dia.) | E (Inlet) | F (Outlet) |
|---------|-------|------|------|--------------------------------|-----------------------------------|---------------------------------------|
| 1295-XX | 1 3/8 | 3.70 | 1.75 | ø1.0312/1.0938 X 2.120 Deep | 1 3/16-12 unf-2a (Male SAE 14) | 1 1/16-12 un-2a (Male 3/4 JIC 37°) |

ORDERING INFORMATION



All dimensions in inches