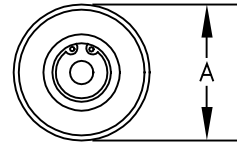
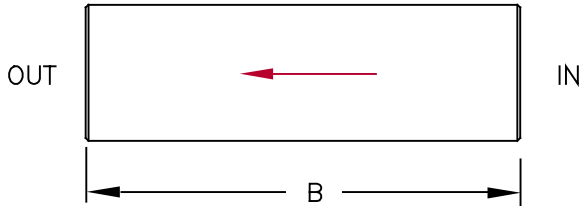




FIXED FLOW CONTROL

PRESSURE COMPENSATED DAMPENED

Slip In Cartridge



(Arrow indicates direction of controlled flow)

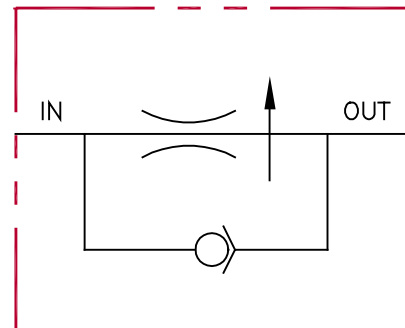
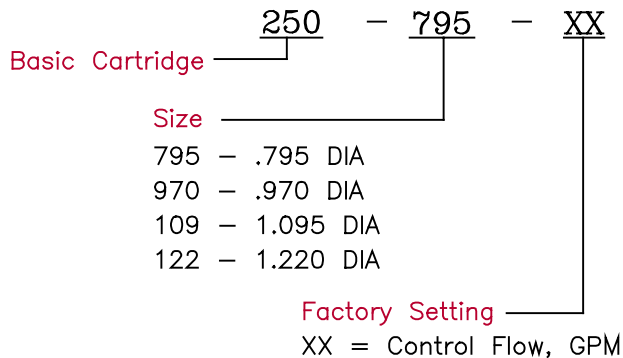
SPECIFICATIONS

| | | | |
|------------|---|---------------------|---|
| Type | Pressure compensated dampened in-line flow control | Flow | Preset by factory to customer specified value (Tolerance: ±15%) |
| Operation | Controls flow in one direction to a preset maximum over a varying pressure range. Dampened dashpot counteracts uneven loading and instability. Free reverse flow. | Max. Pressure | 3,000 psi |
| Material | Aluminum body with steel internal parts | Press. Differential | 50 to 100 psi |
| Rated Flow | Up to 50 gpm | Fluid | General hydraulic fluid |
| | | Operating Temp. | Not Applicable |
| | | Seals | Not Applicable |

DIMENSIONS

| Model | Flow Range | Suggested Bore Dia | A Dia | B |
|------------|-------------|--------------------|-------|------|
| 250-795-XX | .5 - 15 GPM | .797/.802 | .795 | 2.03 |
| 250-970-XX | 1 - 30 GPM | .972/.977 | .970 | 2.78 |
| 250-109-XX | 1 - 30 GPM | 1.097/1.102 | 1.095 | 3.00 |
| 250-122-XX | 3 - 50 GPM | 1.222/1.227 | 1.220 | 3.19 |

ORDERING INFORMATION



All dimensions in inches