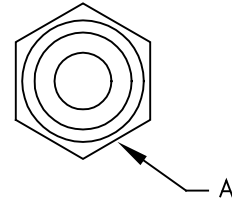
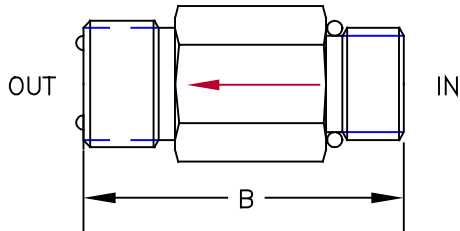


307 SERIES



VELOCITY FUSE IN-LINE SERIES

Male SAE x Male O-Ring Face Seal



(Arrow indicates direction of closing flow)

SPECIFICATIONS

Type	In-line velocity fuse (hose break valve)	Closing Flow	Preset by factory to customer specified value (Tolerance: +20%/−0%)
Operation	Shuts off flow if it exceeds the preset rate. Fuse will remain closed until pressure is equalized. Reverse flow is free and uncontrolled.	Max. Pressure	3,000 psi
Material	All steel construction Black oxide finish	Press. Differential	50 to 100 psi
Rated Flow	Up to 60 gpm	Fluid	General hydraulic fluid
		Operating Temp.	−40°F to +200°F
		Seals	Buna-n

DIMENSIONS

Model	Inlet	Outlet (O-Ring Face Seal)	Flow Range	A Hex	B
307-T8-XX	SAE 8	SAE 8, 13/16-16 un	.5 - 8 GPM	7/8	1.75
307-T10/T8-XX	SAE 10	SAE 8, 13/16-16 un	1 - 20 GPM	1	2.20
307-T10-XX	SAE 10	SAE 10, 1-14 uns	1 - 20 GPM	1 1/4	2.44
307-T12/T10-XX	SAE 12	SAE 10, 1-14 uns	2 - 35 GPM	1 1/4	2.00
307-T14/T10-XX	SAE 14	SAE 10, 1-14 uns	2 - 45 GPM	1 3/8	2.50
307-T16/T12-XX	SAE 16	SAE 12, 1-14 uns	5 - 60 GPM	1 1/2	3.06

ORDERING INFORMATION

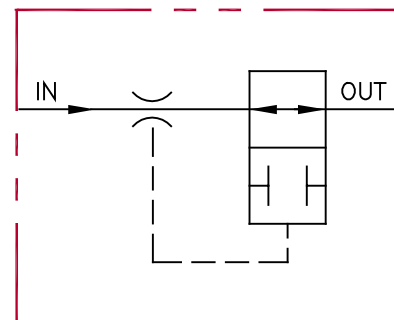
Basic Cartridge **307** - **T8** - **XX**

Size

- T8 - SAE 8 X SAE 8 O.F.S.
- T10/8 - SAE 10 X SAE 8 O.F.S.
- T10 - SAE 10 X SAE 10 O.F.S.
- T12/T10 - SAE 12 X SAE 10 O.F.S.
- T14/T10 - SAE 14 X SAE 10 O.F.S.
- T16/T12 - SAE 16 X SAE 12 O.F.S.

Factory Setting

XX = Closing flow rate, GPM



All dimensions in inches