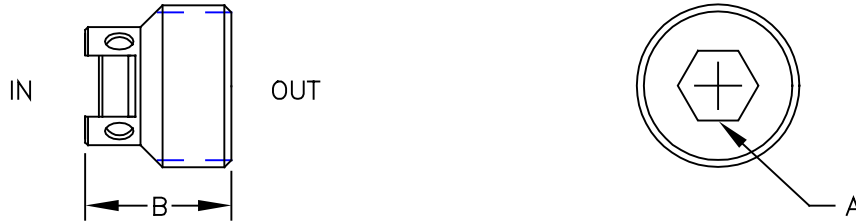




VELOCITY FUSE

IN-LINE SERIES

SAE Threaded Cartridge



(Arrow indicates direction of closing flow)

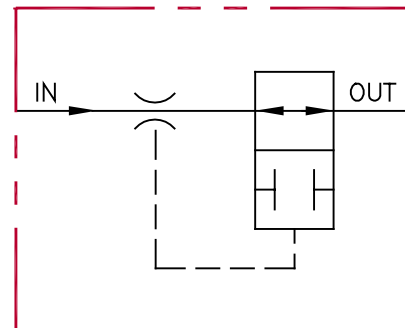
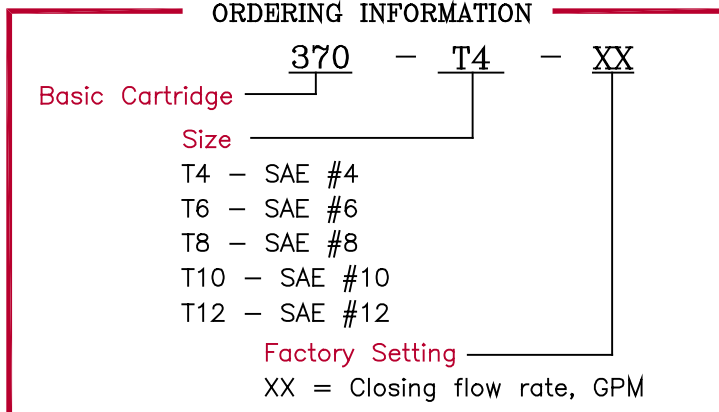
SPECIFICATIONS

Type	In-line velocity fuse (hose break valve)	Closing Flow	Preset by factory to customer specified value (Tolerance: +20%/-0%)
Operation	Shuts off flow if it exceeds the preset rate. Fuse will remain closed until pressure is equalized. Reverse flow is free and uncontrolled.	Max. Pressure	3,000 psi
		Press. Differential	50 to 100 psi
		Fluid	General hydraulic fluid
Material	All steel construction	Operating Temp.	Not Applicable
Rated Flow	Up to 45 gpm	Seals	Not Applicable

DIMENSIONS

Model	Thread Size	Flow Range	A Hex	B
370-T4-XX	7/16-20 unf	.5 - 4 GPM	3/16	.75
370-T6-XX	9/16-18 unf	.5 - 8 GPM	3/16	.75
370-T8-XX	3/4-16 unf	1 - 20 GPM	5/16	.79
370-T10-XX	7/8-14 unf	2 - 30 GPM	3/8	.79
370-T12-XX	1 1/16-12 un	2 - 45 GPM	7/16	.96

ORDERING INFORMATION



All dimensions in inches