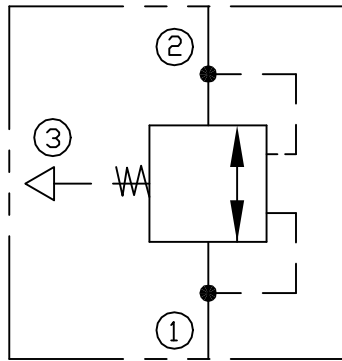


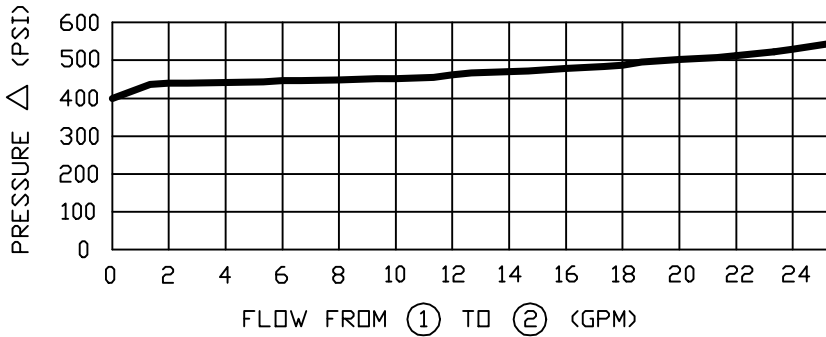
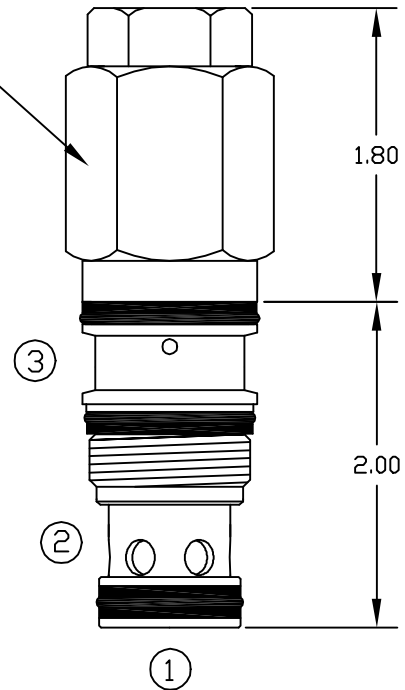


CHAIN SLACK VALVE

T-2A CAVITY



1 1/8" HEX



SPECIFICATIONS

Operation: For lift truck applications. The chain slack valve maintains pressure in the main lift cylinder to prevent a sudden load dropping due to slack in the lift chain that was created by the forks being "over lowered".

Material:	All steel construction	Pressure Setting:	Preset by factory to customer specified value from 150 to 500 psi. (Tolerance: ±10%)
Rated Flow:	Up to 25 gpm	Reseat Pressure:	80% of set pressure.
Max. Press:	3000 psi	Max. leakage:	5 drops per minute
Fluid :	General hydraulic fluid	Operating Temp.:	-40°F to +200°F
Cavity:	T-2A	Seals:	Buna-n
Torque:	45 to 50 ft-lbs		

ORDERING INFORMATION

