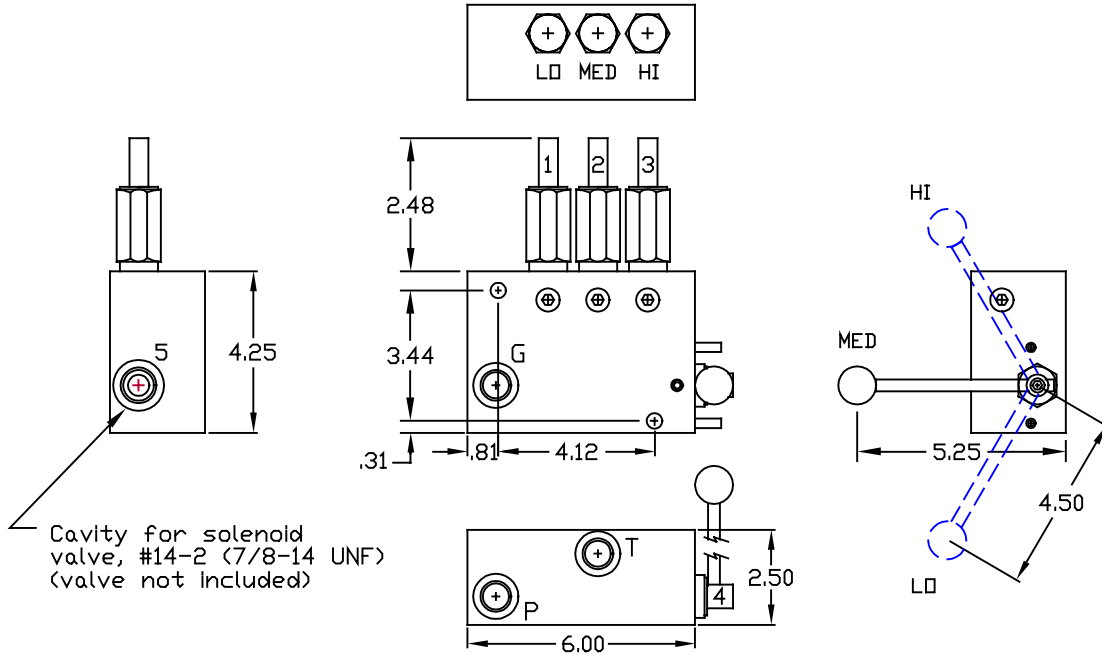




PRESSURE SELECTOR VALVE



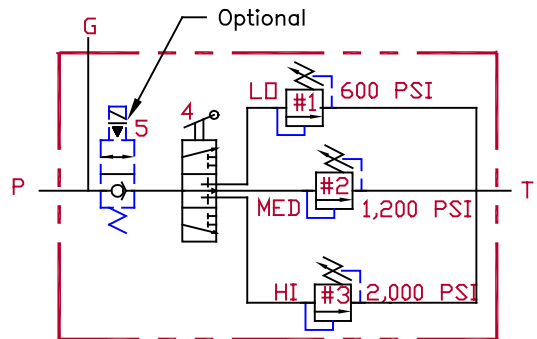
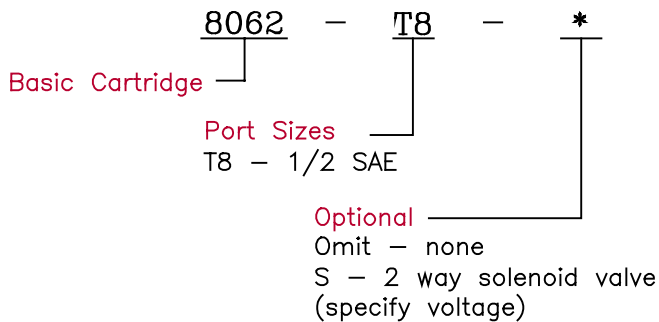
SPECIFICATIONS

Type	Manual 3-position relief selector valve. Utilizes industry standard relief valve cartridges.	Material	Aluminum body with hardened & ground steel relief valves
Operation	For applications requiring an operator to select system pressure. Position of the hand lever allows flow into one of the 3 relief valves for a low, medium or high pressure setting. Each relief is adjustable.	Rated Flow	30 GPM
		Fluid	General hydraulic fluid
		Max. Pressure	3000 psi
		Operating Temp.	-40°F to +200°F
		Seals	Buna-n

DIMENSIONS

Model	Port Sizes	Std. Relief Setting			Rated Flow
		#1 LO	#2 MED	#3 HI	
8062-T8-(*)	SAE 8	600 PSI	1200 PSI	2000 PSI	30 GPM

ORDERING INFORMATION



All dimensions in inches