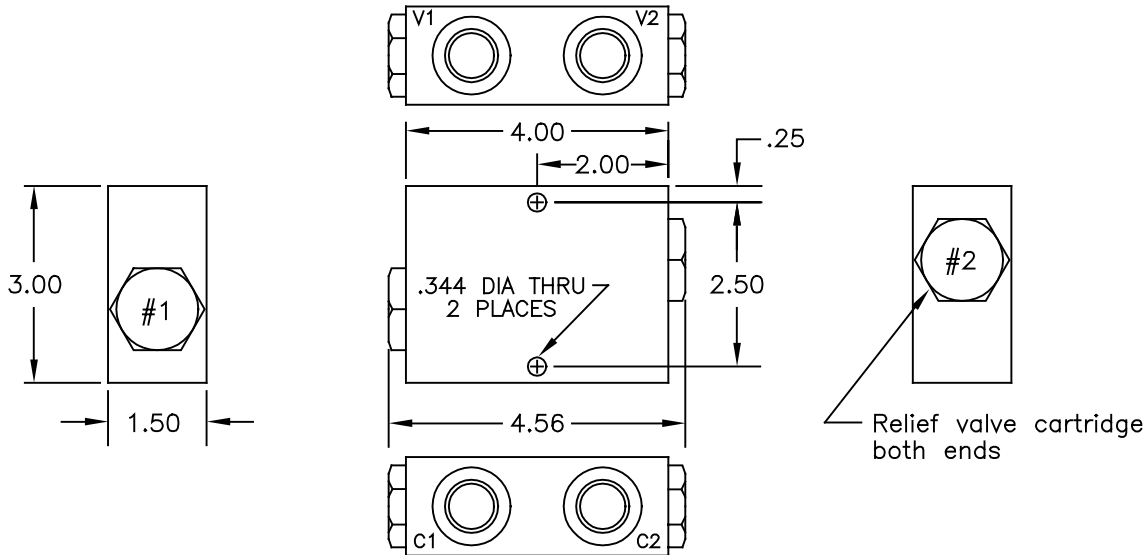




CROSSOVER RELIEF VALVE DIRECT ACTING

Non-adjustable



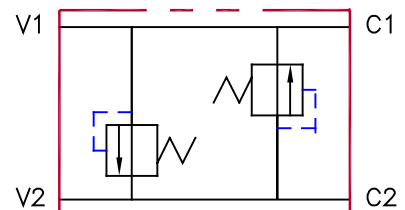
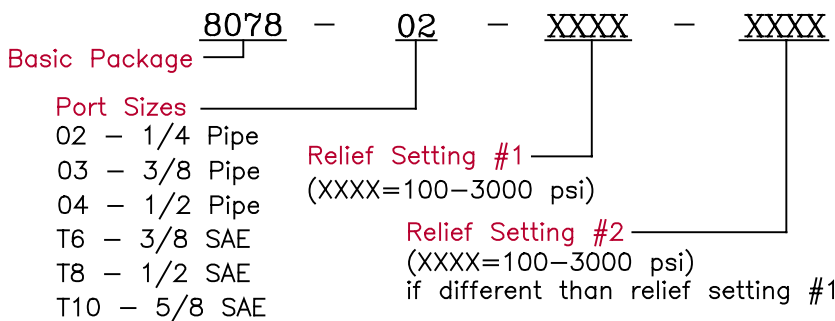
SPECIFICATIONS

Type	Crossover relief valve used to protect hydraulic motors from load induced pressure surges. Direct acting ball type relief.	Material	Aluminum body with hardened steel internal parts
Operation	Allows flow to pass freely from V1 to C1 & V2 to C2. The relief opens when pressure exceeds the preset setting allowing flow to enter the opposite cylinder port.	Relief Setting	Preset by factory to customer specified value.
		Fluid	General hydraulic fluid
		Max. Pressure	3000 psi
		Operating Temp.	-40°F to +200°F
		Seals	Buna-n

DIMENSIONS

Model	Port Sizes	Pressure Range	Rated Flow
8078-02-XX-XX	1/4 NPT	100 - 3000 PSI	10 GPM
8078-03-XX-XX	3/8 NPT	100 - 3000 PSI	10 GPM
8078-04-XX-XX	1/2 NPT	100 - 3000 PSI	10 GPM
8078-T6-XX-XX	SAE 6	100 - 3000 PSI	10 GPM
8078-T8-XX-XX	SAE 8	100 - 3000 PSI	10 GPM
8078-T10-XX-XX	SAE 10	100 - 3000 PSI	10 GPM

ORDERING INFORMATION



All dimensions in inches