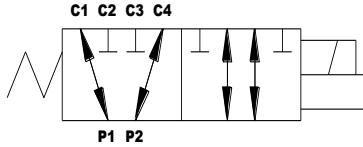


Circuit Selector HYDRAULIC VALVE

SF1643



Design Features

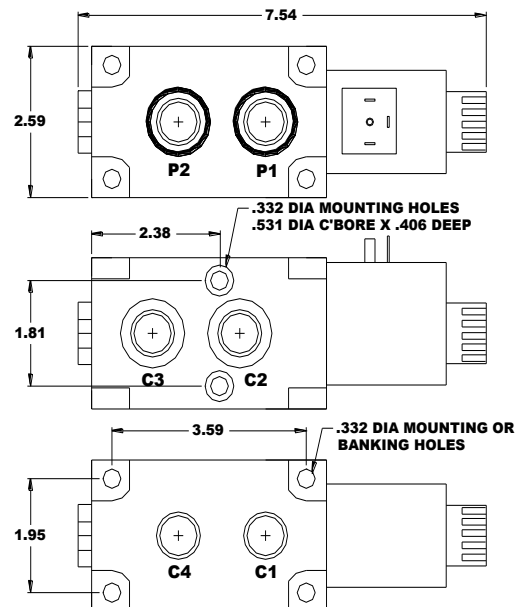
- High flow at low pressure drop
- Use individually
- Can be bolted together for multiple valve bank
- Heavy duty cast steel body
- Yellow zinc plated
- One piece tube assembly
- One piece encapsulated coil (easy to replace).
- Manual override
- Mount in any position

Specifications

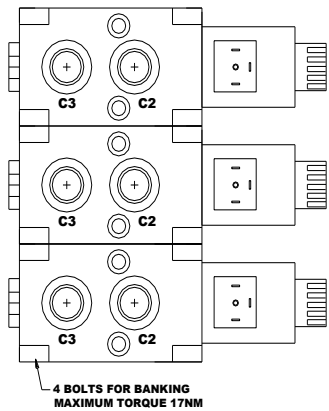
- 3,600 psi (250 bar) Maximum Operating
- 15 GPM (57 LPM) Nominal Flow
- Ports: 1/2" SAE (SAE 8) Standard
- 6 Ports
- 12, 24 & 48 Volts DC available
- 36 Watt
- ISO 43650 DIN Coil Connections
- Manual Override



Dimensions

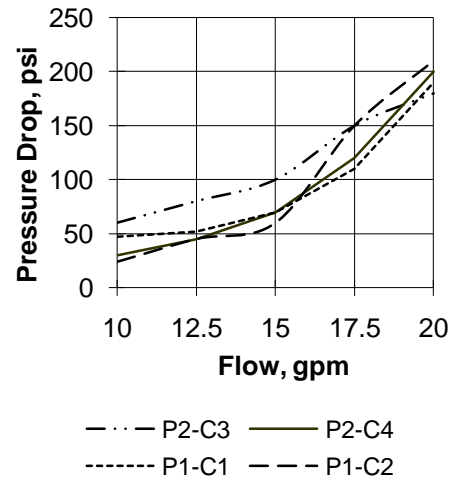


Valve Bank

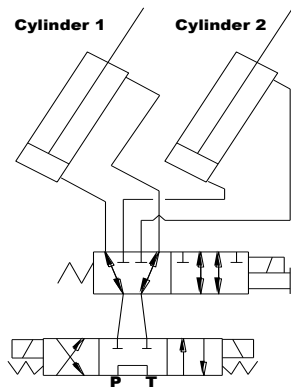


Flow Curve

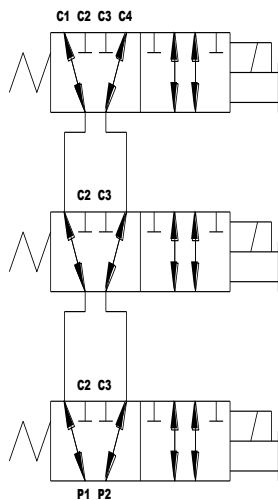
Pressure Drop vs. Flow



Typical Circuit



Multiple Bank of 3 Valves



Ordering Part Number

Model **SF1643-xx**

xx = Coil Voltage
 12 = 12 VDC
 24 = 24 VDC
 48 = 48 VDC

SAE 8 Ports standard
 DIN Connectors standard

Logic Hydraulic Controls, Inc.

6616 Windmill Way
 Wilmington, NC 28405
 Phone 910-791-9293
 Fax 910-392-5621

www.logichyd.com