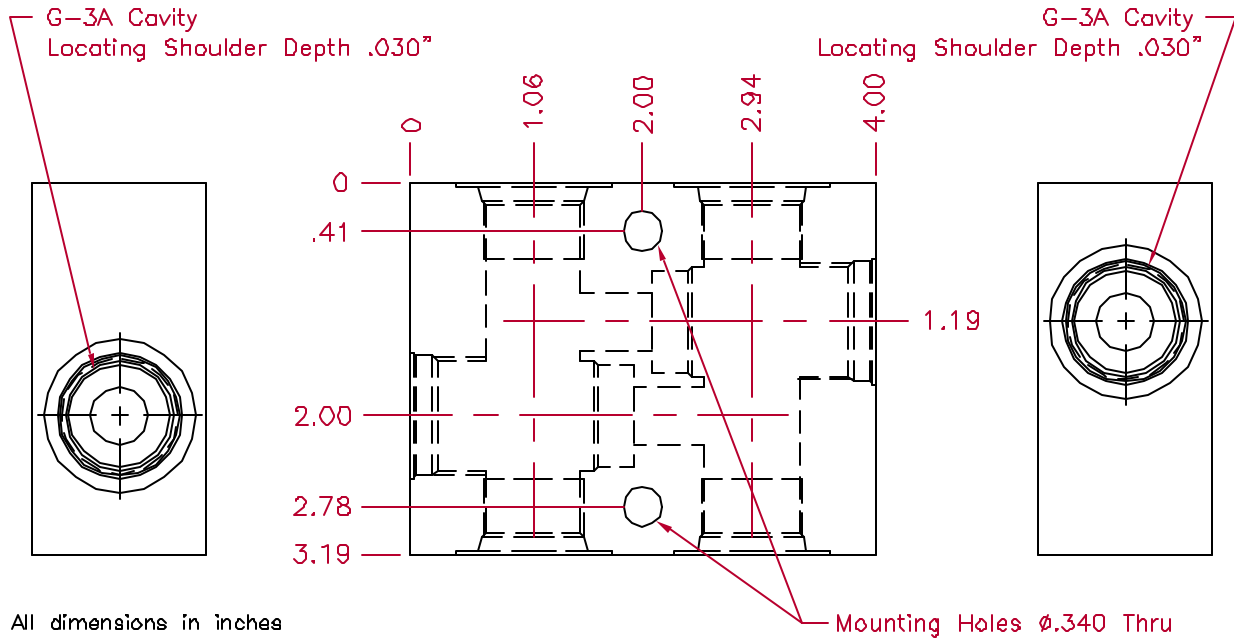
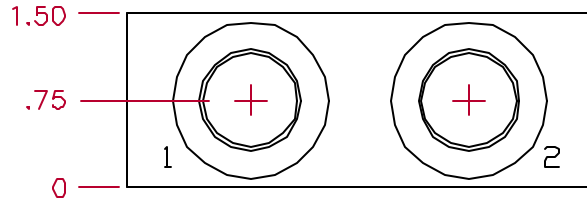


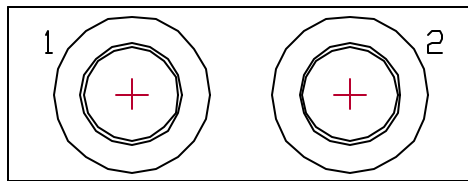


G-3A CAVITY
CROSSOVER RELIEF BODIES



All dimensions in inches

Mounting Holes ϕ .340 Thru



ORDERING INFORMATION

G3A-XR - 4P A

Body Series ————

Port Size (1 & 2) ————

Block Material
A - Aluminum

4P - 1/2 NPTF
6P - 3/4 NPTF
T6 - 3/8 SAE(#6)
T8 - 1/2 SAE(#8)
T10 - 5/8 SAE(#10)

Typical cartridges
used with this body

GPR3 - *****